



THE CHESTNUT



SPECIFICATIONS

- 2 Car Garage
- 2,267 sf
- 3 Bedrooms
- 2.5 Bathrooms

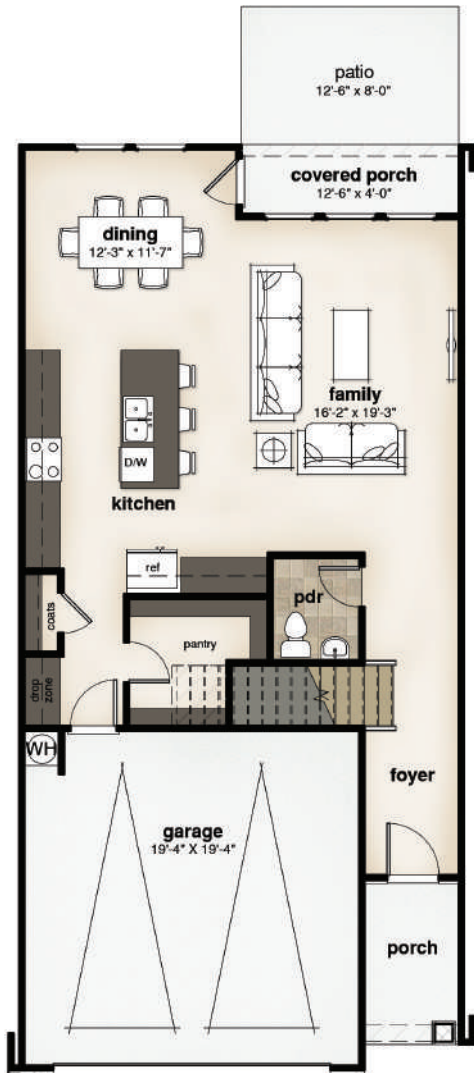
INCLUDED FEATURES:

OPEN FLOOR PLAN | OVERSIZED KITCHEN ISLAND WITH SEATING
UPSTAIRS LOFT

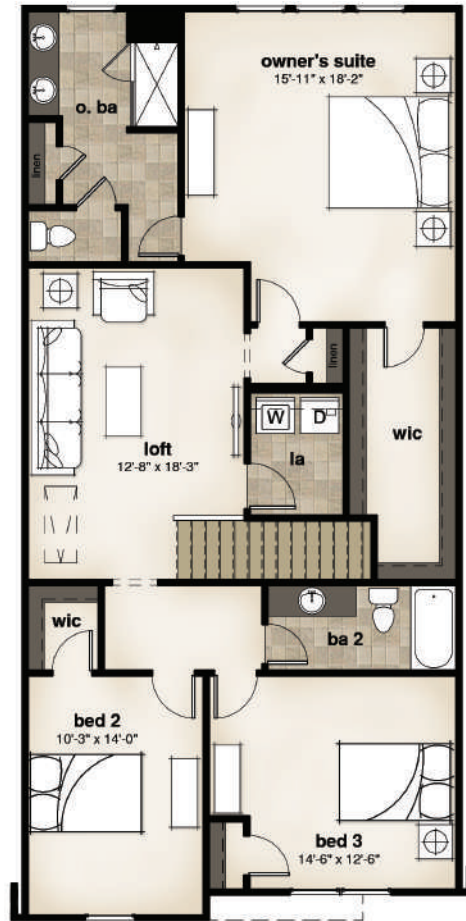
OPTIONAL FEATURES:

GOURMET KITCHEN | SCREENED PORCH
COVERED PORCH | LUXURY SHOWER | OWNER'S TERRACE

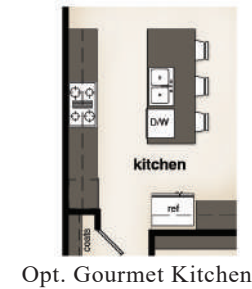
FLOOR PLANS



FIRST FLOOR



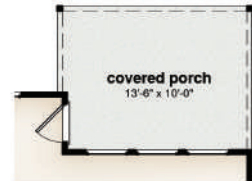
SECOND FLOOR



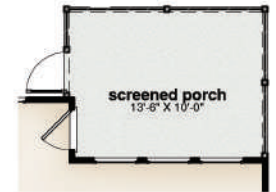
Opt. Gourmet Kitchen



Opt. Luxury Shower



Opt. 10' Covered Porch



Opt. 10' Screened Porch



Opt. Porch at Owner's Terrace

OPTIONS

Exterior elevations and floor plans are artist renderings only and are subject to change. Elevations and floor plans shown may represent upgrades or options that are offered at an additional cost to the base purchase price. Seller reserves the right to change or substitute products, colors, and materials. Refrigerator, washer, dryer, and furniture shown in the floor plans are not included. Window layout is dependent on home site location and floor plan elevation.